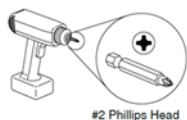


FLUX OPEN PLAN

HOW TO ASSEMBLE AN END SUPPORT STORAGE CABINET

Recommended Tools



Hardware Needed



#10 x 7/8 PHP Screws

Failure to comply with installation instructions will compromise the safety, durability and performance of this product, which may risk injury to the user of this product and/or diminish the product life cycle. Jasper Group assumes no liability in these instances.

Above Worksurface

1. Position the cabinet on the base frame so that it is aligned with the vertical portion of the frame (Figure 1)
2. Use #10 x 7/8 screws to secure the top to the frame (Figure 2)

Figure 1

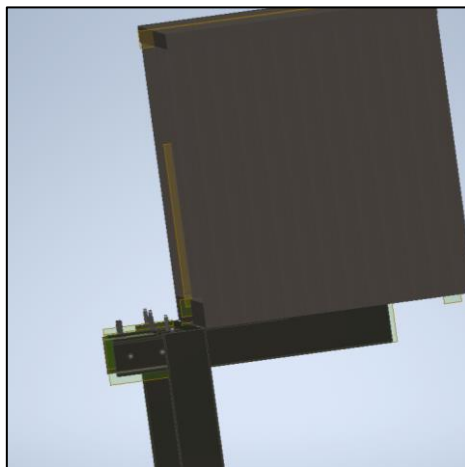
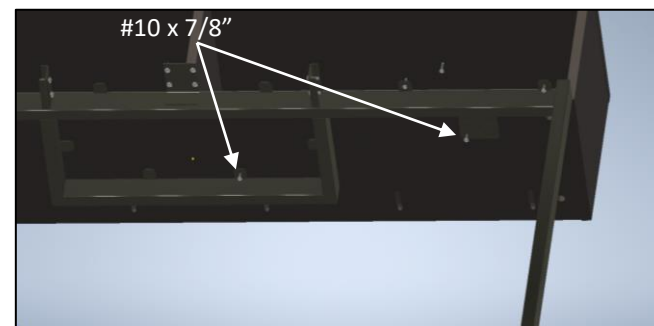


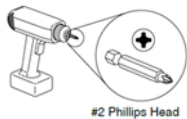
Figure 2



FLUX OPEN PLAN

HOW TO ASSEMBLE AN END SUPPORT STORAGE CABINET

Recommended Tools



Hardware Needed



#10 x 7/8 PHP Screws

Failure to comply with installation instructions will compromise the safety, durability and performance of this product, which may risk injury to the user of this product and/or diminish the product life cycle. Jasper Group assumes no liability in these instances.

Below Worksurface

1. Slide the brackets into the pre-cut slots in the upper back of the cabinets (Figure 1)
2. Use #10 x 7/8 screws to secure the top to the frame (Figure 2)

Figure 1

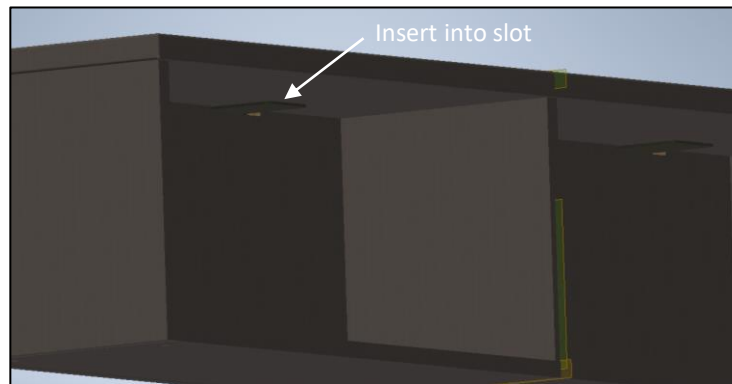


Figure 2

